



The ORIGINAL 750 SLANT BACK VENT

THE ORIGINAL

- The Original Slant Back Design
- The Original Weather Proof Design
- The Original Bird Proof Design
- The Original Upward Discharging Louver Design

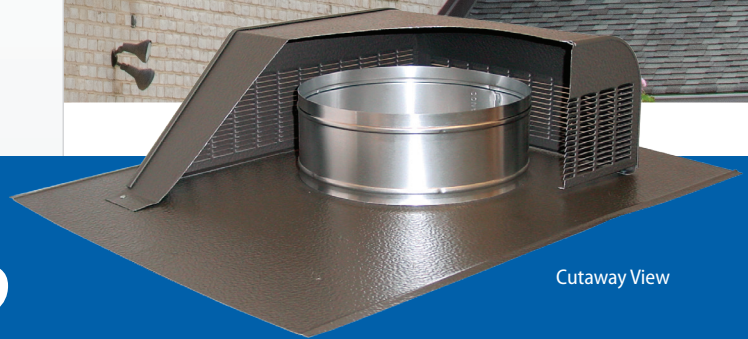
FIELD TESTED & PROVEN

- Field Tested & Proven for Over 60 Years
- Field Tested & Proven to Prevent Roof Discoloration
- Field Tested & Proven Stack Effect for Enhanced Airflow
- Field Tested & Proven Customer Satisfaction



**OFTEN IMITATED,
NEVER DUPLICATED**

North American Contractors' "Roof Vent of Choice" for over 60 years!

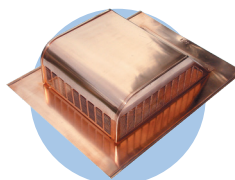
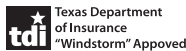


Cutaway View

Product Listings

Model	MD	TDI	CSA	WUI*
730	•	•		
750	•	•	•	
750-S	•	•	•	•
750-G Galvanized Steel			•	
750-GS Galvanized Steel			•	•
750-E	•			
750-ES				•
770	•	•	•	
770-D	•	•		

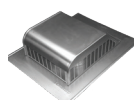
*product meets WUI (Wildland Urban Interface) prescriptive text for combustible vents. View text at lomanco.com/wui



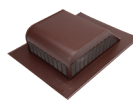
Specialty Item:
750 is also
available in
Copper.

Model	Overall Size (in.)	Opening Size (in.)	NFA (in. ²)
750	16 x 20 ⁵ / ₁₆ x 5	8	50
750-G Galvanized Steel	16 x 20 ⁵ / ₁₆ x 5	8	50
750-E	23 x 27 ¹ / ₄ x 5	8	50
750-S	16 x 20 ⁵ / ₁₆ x 5	8	50
750-GS Galvanized Steel	16 x 20 ⁵ / ₁₆ x 5	8	50
750-ES	23 x 27 ¹ / ₄ x 5	8	50

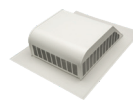
Available Colors:



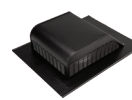
Mill Finish



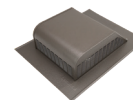
Brown



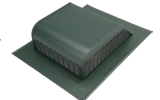
White



Black



Weathered Bronze



Forest Green
(available in aluminum only)



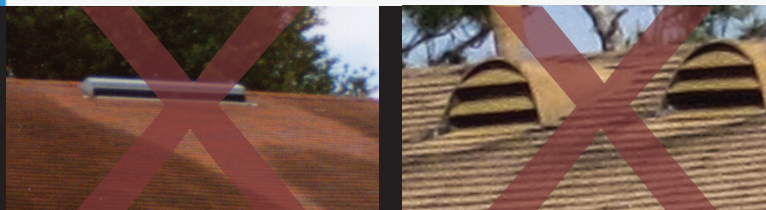
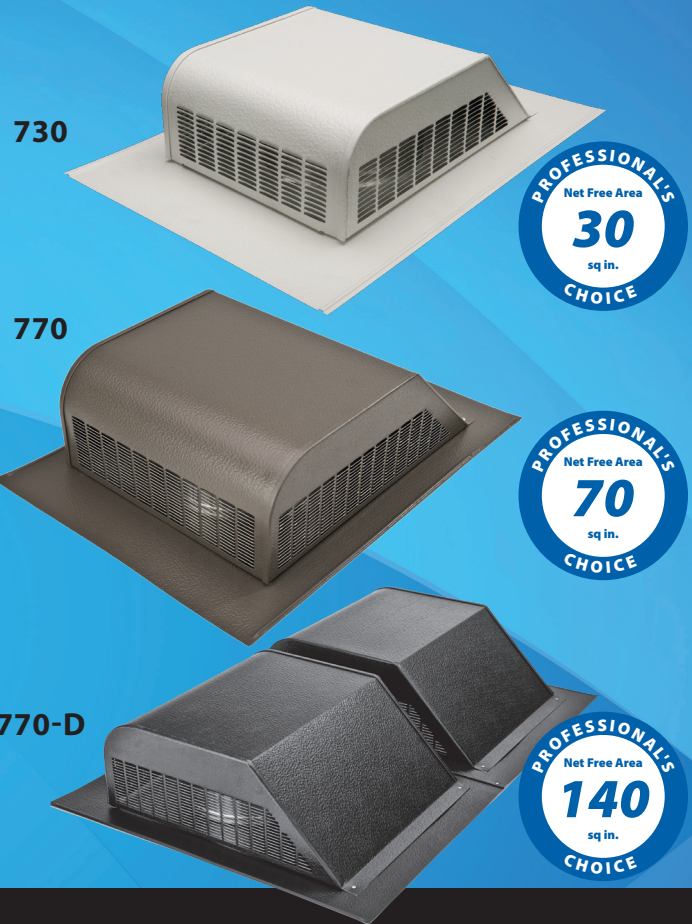
Roof Vents

700 SERIES

Lomanco 700 Series Roof Louvers are built with three outward and upward discharging side vents to prevent unsightly roof streaking that is so common with ordinary roof louvers. This exclusive Lomanco design also prevents the problem of bird and animal infiltration while providing maximum attic exhaust air flow and weather protection.

FEATURES:

- Designed to prevent roof discoloration.
- Three sides louvered for greater air flow.
- Embossed aluminum finishes for added strength, extended paint life, and blending appearance with shingles.
- **750 is the ORIGINAL slant back vent. See reverse for additional 750 Series specs and options.**
- 700 has neoprene damper for use as kitchen/bathroom exhaust vent.
- 730 is a smaller version of a 750 and included in the EVA Combo vent package.
- 750-E is a 750 with an extended flange size.
- 750-G; heavy duty galvanized steel construction.
- 750-S, 750-GS & 750-ES; metal screen insert for enhanced weather protection.
- 770 is a larger version of a 750.
- 770-D is a twin 770; off-ridge vent.



PREVENTS UNSIGHTLY ROOF DISCOLORATION

Standard Colors Available:



Model	Overall Size (in.)	Opening Size (in.)	NFA (in. ²)
730	12 ³ / ₁₆ x 17 ³ / ₄ x 4	6 1/4	30
750	16 x 20 ⁵ / ₁₆ x 5	8	50
770	16 ⁵ / ₈ x 22 ³ / ₈ x 6	9 1/2	70
770-D	32 1/2 x 22 ³ / ₈ x 6	Two 9 1/2	140
700	16 x 20 ⁵ / ₁₆ x 5	8	—

How many vents do you need?

Select the Attic Floor Space to be ventilated and an **Exhaust System** — find where the two intersect to determine the amount of exhaust vents needed. Select an Intake System and repeat the steps to determine the amount of intake vents needed.

ATTIC FLOOR SPACE IN SQ. FT.	1000									1500									2000									2500									3000									3500									
	Intake									Intake									Intake									Intake									Intake									Intake									
	Exhaust	C416	C616	C816	105/190	140	SV-10	DA-4/IV-9	Exhaust	C416	C616	C816	105/190	140	SV-10	DA-4/IV-9	Exhaust	C416	C616	C816	105/190	140	SV-10	DA-4/IV-9	Exhaust	C416	C616	C816	105/190	140	SV-10	DA-4/IV-9	Exhaust	C416	C616	C816	105/190	140	SV-10	DA-4/IV-9	Exhaust	C416	C616	C816	105/190	140	SV-10	DA-4/IV-9	Exhaust	C416	C616	C816	105/190	140	SV-10
730	8	10	7	4	4	3	4	7	12	15	10	6	5	6	10	16	16	20	13	8	7	6	8	14	20	24	17	10	9	7	10	17	24	29	20	12	10	9	12	20	28	34	23	13	12	10	14	24							
750 Series	5	10	7	4	4	3	4	7	8	16	11	7	5	7	12	10	10	20	14	8	7	6	8	14	12	24	17	10	9	7	10	17	15	30	21	12	11	9	12	21	17	34	23	14	12	10	14	24							
770	4	12	8	5	4	4	5	8	6	17	12	7	5	7	12	7	7	20	14	8	7	6	8	14	9	26	18	10	9	8	10	18	11	31	21	12	11	9	13	11	12	34	23	13	12	10	14	24							
770-D	2	12	8	5	4	4	5	8	3	17	12	7	5	7	12	4	4	23	16	9	8	7	9	16	5	28	19	11	10	8	12	20	6	34	23	13	12	10	14	14	6	34	23	13	12	10	14	24							