



Complete Commercial
Roofing Systems:
Edge-to-Edge &
Deck-to-Sky™

Manufacturer of the
World's Best Roof®
Proven performance since 1978

Building Relationships Through Partnership and Innovation



Since 1978, billions of square feet of Duro-Last® single-ply roofing have been installed throughout North America. We stand by every square foot with our best-in-class warranties, Quality Assurance department and commitment to providing problem-solving products.

Dedication

Duro-Last will do what it takes to get the job done, whether you are a roofing contractor, building owner, architect, specifier, roof consultant or engineer. We are with you — from design through post-installation inspection — to ensure that the “World’s Best Roof®” is delivered.

Quality

Duro-Last is a leader in vertical integration. Since the beginning, our founder, John R. Burt, strived to produce as many parts of a Duro-Last assembly in-house while also embracing the Edge-to-Edge & Deck-to-Sky™ approach. All of this allows Duro-Last to control quality from top to bottom.

Innovation

With entrepreneurial roots, Duro-Last cultivates a culture of innovation. We are always looking for ways to make roof systems better and solve problems for our customers.





The Duro-Last Difference

Custom-fabrication sets Duro-Last apart. Duro-Last can fabricate deck sheets and accessories to fit each building.

Custom-fabrication dramatically reduces rooftop labor — when workers are on the rooftop where the environment is harsh and unpredictable. Whether you are using custom-fabricated deck sheets or roll goods, Duro-Last's custom-fabricated flashings and accessories address the critical transition areas of a roof. All of this leads to a long-term, low-maintenance solution.



Industry Leadership

Since 1978, the Duro-Last PVC roofing membrane has proven to be durable, serviceable, flame resistant, highly flexible and recyclable. With the completion of our technologically advanced PVC extruder, we further strengthened our commitment to the proven performance of PVC roofing.

All Duro-Last roofing membranes are UL and FM approved, and many of our metal products offer ES-1 compliance. For more information on code approvals and standards, visit the Duro-Last website at www.duro-last.com.



Warranties

Duro-Last warranties provide unparalleled protection for virtually all commercial roofing applications. We have warranty options to suit your needs, including hail and high-wind warranties, and we were the first manufacturer to offer a warranty that expressly covered consequential damages.

North American Footprint

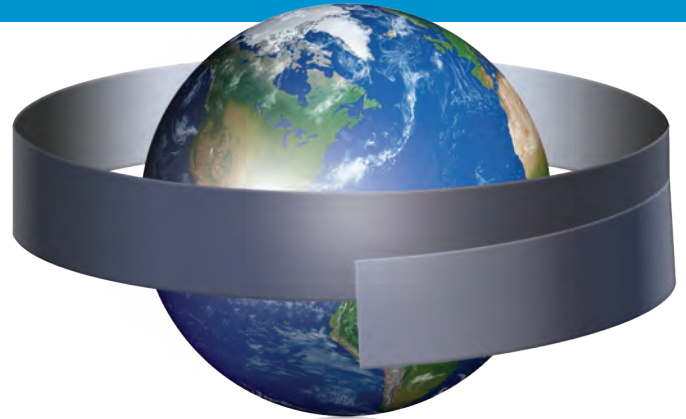
We are "keeping North America covered" through strategically placed Quality Assurance Technical Representatives for service and inspections, an Engineering Services Department and six manufacturing facilities.

- **Saginaw, Michigan** – *Corporate Headquarters*
- **Grants Pass, Oregon**
- **Jackson, Mississippi**
- **Sigourney, Iowa**
- **Carrollton, Texas**
- **Ludlow, Massachusetts**

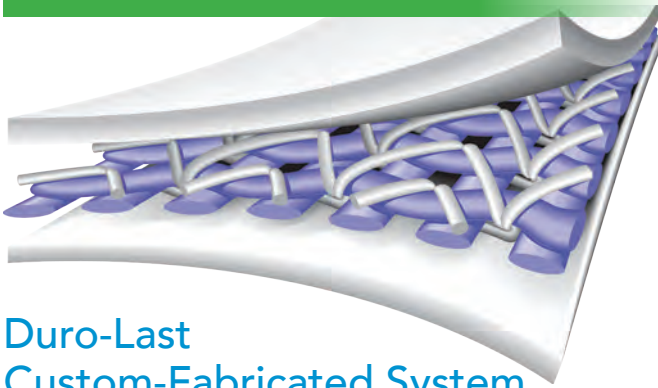




Duro-Last Membrane Systems: Billions of Square Feet Installed



MEMBRANES



Duro-Last Custom-Fabricated System

The Duro-Last flagship membrane is a proprietary thermoplastic formulation that provides exceptional flexibility, reflectivity and resistance to UV radiation, fire and a broad range of chemicals.

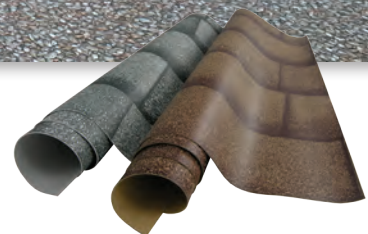
A key Duro-Last difference is a weft-insertion anti-wicking scrim with a density of 18 by 14 threads per inch — which gives the Duro-Last membrane its strength and durability.

- Available in 40, 50 and 60 mil membranes
- Colors: White, tan, light gray, dark gray, terra cotta
- Only product in the marketplace to offer custom-fabrication of the entire roofing membrane
- Unique in the industry, Duro-Last offers a 15-year warranty with consequential damage coverage for commercial buildings with the Duro-Last custom-fabricated roofing system
- Can be mechanically attached, adhered or induction welded using the Duro-Bond® system

Designer Series: Rock-Ply® and Shingle-Ply®

Our Designer Series membranes provide an aesthetic look plus the watertight performance and long-term durability of the Duro-Last Roofing System. Each system has either shingle or ballast design printed directly onto the membrane.

- Available in 50 mil
- Shingle-Ply colors: slate gray or sandstone

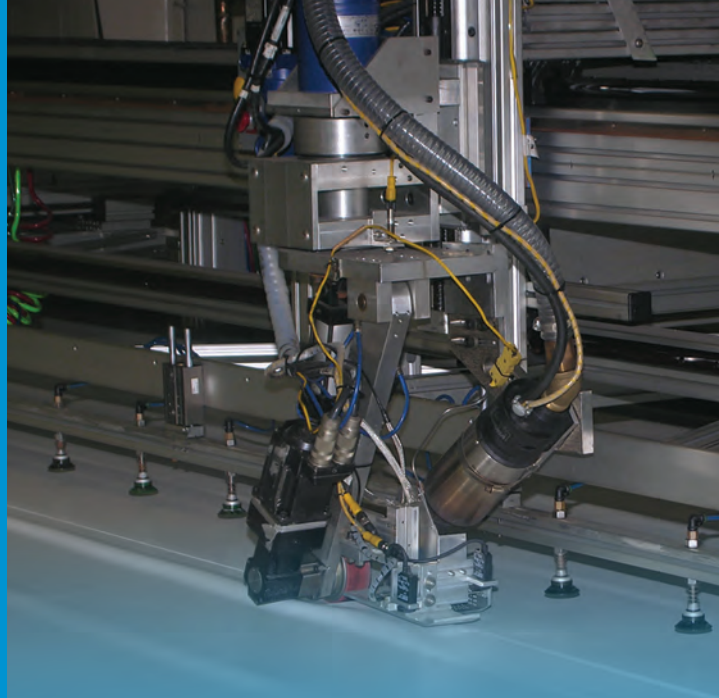


CUSTOM-FABRICATION

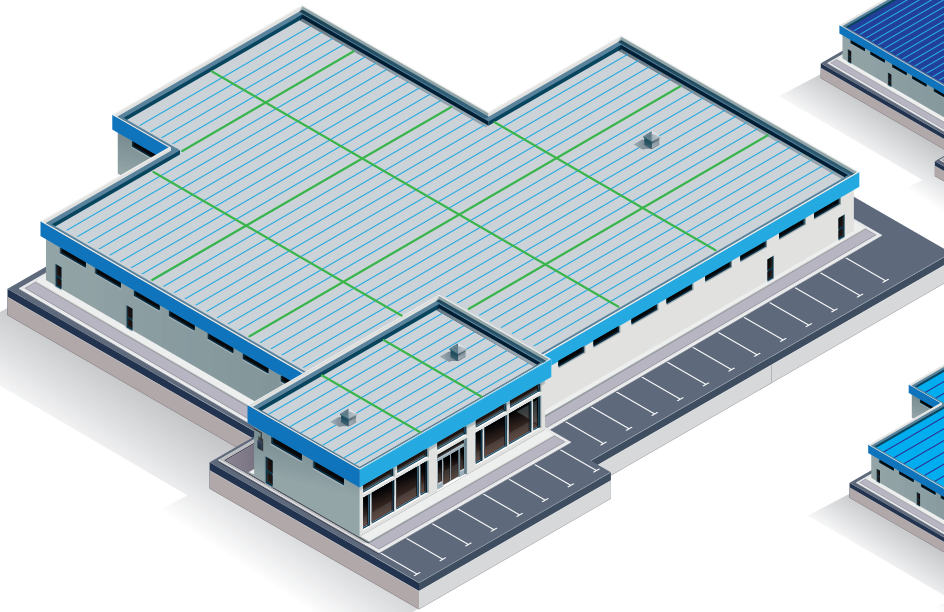
It's as Easy as it "Seams"

Custom-Fabrication from Duro-Last: Fewer Seams = Fewer Leaks

When you install a custom-fabricated Duro-Last Roofing System, up to 85% of the seams can be completed in our factory-controlled environment before the roofing system is delivered to the job site. By eliminating most of the on-site seaming, Duro-Last dramatically reduces the potential for leaks — and adds the advantages of a faster, quieter and easier installation, with less maintenance and reliable performance for years to come.



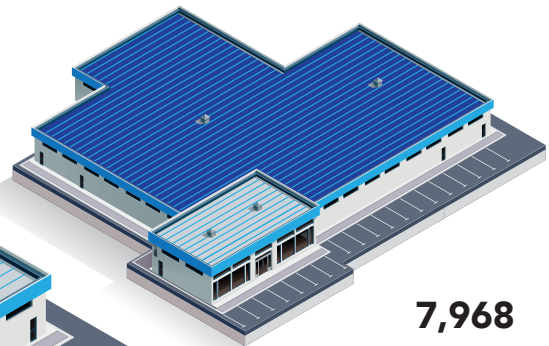
The Duro-Last Difference*



1,278

- Custom-fabricated Duro-Last Roofing System – 5' Laps
- Custom-fabricated Membrane Sheets
- Linear Feet of Field Seams – 1,278 (Green)

(Blue lines represent Duro-Last factory seams)



7,968

- 6' Wide Roll Good Systems
- Linear Feet of Field Seams – 7,968



5,130

- 10' Wide Roll Good Systems
- Linear Feet of Field Seams – 5,130



Additional Membrane Solutions

Duro-Last also offers other PVC membrane solutions. Although we are committed to the benefits of custom-fabrication, we realize that it may not be the ideal solution for all jobs and roofing contractors. Roll goods from Duro-Last enable installation on challenging roofs that are difficult to measure and projects in extreme weather.

A complete line of custom-fabricated accessories is available for each membrane product line.

Duro-Tuff®

Duro-Tuff was introduced to provide a better roll good product while also providing a cost-effective, secure and watertight installation.

- Available in 50, 60 and 80 mil
- Roll widths: 10", 30", 5', 10'
- Can be mechanically attached, adhered or induction welded using the Duro-Bond system

Duro-Fleece®

Duro-Fleece combines a PVC thermoplastic membrane and a high-quality fleece material on the underside of the membrane. Our Duro-Fleece membranes are an ideal product for use in adhered and mechanically fastened applications over a wide variety of roof substrates.

- Available in 50, 60 and 80 mil
- Roll widths: 5', 10'
- Can be mechanically attached or adhered

Duro-Tuff and Duro-Fleece Colors

Duro-Tuff and Duro-Fleece membranes are available in a variety of colors. These membranes have the same color film throughout to reduce the visual effects of bleed out as well as the availability of color matched custom membrane accessories.



- Color options: blue, copper, charcoal, dark green, patina, light gray and light tan
- Duro-Tuff Colors roll widths: 10", 30", 5', 10'
- Duro-Fleece Colors roll widths: 5', 10'

Duro-Last EV

Duro-Last's ketone ethylene ester (KEE) containing membrane, Duro-Last EV, offers the UV resistance, reflectivity and chemical resistance that Duro-Last is known for. Duro-Last EV contains DuPont's™ Elvaloy®, which provides durable flexibility in roofing membranes. Duro-Last EV is flexible and weldable in low temperatures and performs well in cold, harsh environments.

- Available in 50 and 60 mil
- Roll widths: 10", 30", 5', 10'
- Can be mechanically attached, adhered or induction welded using the Duro-Bond system



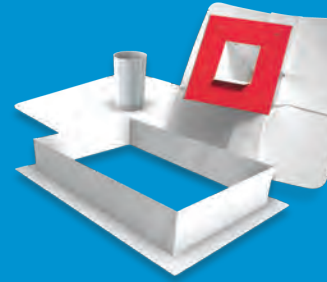
The Prefab Four

1. Factory welded seams mean better first-time quality and less callbacks
2. Custom-fabricated accessories provide easier transitions, superior waterproofing and aesthetics
3. Less labor for Time off the Roof™
4. Clean installations offer less job site waste and disruptions

Custom-Fabricated Benefits for Any Duro-Last Roof

Custom-fabricated accessories and details from both Duro-Last and our EXCEPTIONAL® Metals division offer the perks of factory fabrication to roofs installed with any Duro-Last membrane — even roll goods.

Custom-fabricated stack and curb flashings eliminate rooftop labor on the most critical roof areas — penetrations and transitions. Many of these accessories, including metal scuppers and collector boxes, come with the Duro-Last membrane already welded to it. Flashings for difficult areas like corners and parapet wall transitions come pre-welded as well.



The benefit of these products is twofold: First, having the welding completed in our factory-controlled environment provides a better-looking finished product along with the necessary watertight integrity. Second, rooftop labor is greatly reduced, getting roofing crews off the roof faster and on to the next job.

Factory Welded



Easy Transitions



Less Labor

Clean Installations

THE PREFAB FOUR



Edge-to-Edge Solutions

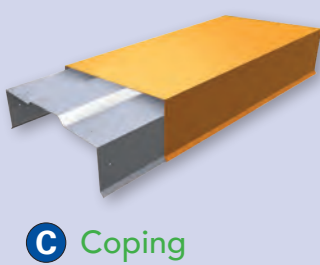
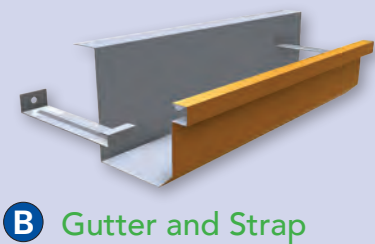
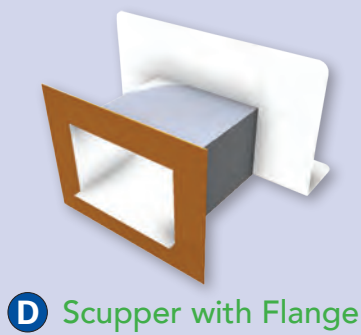
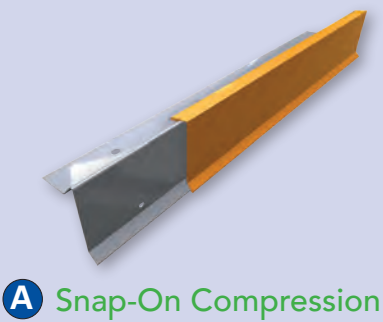
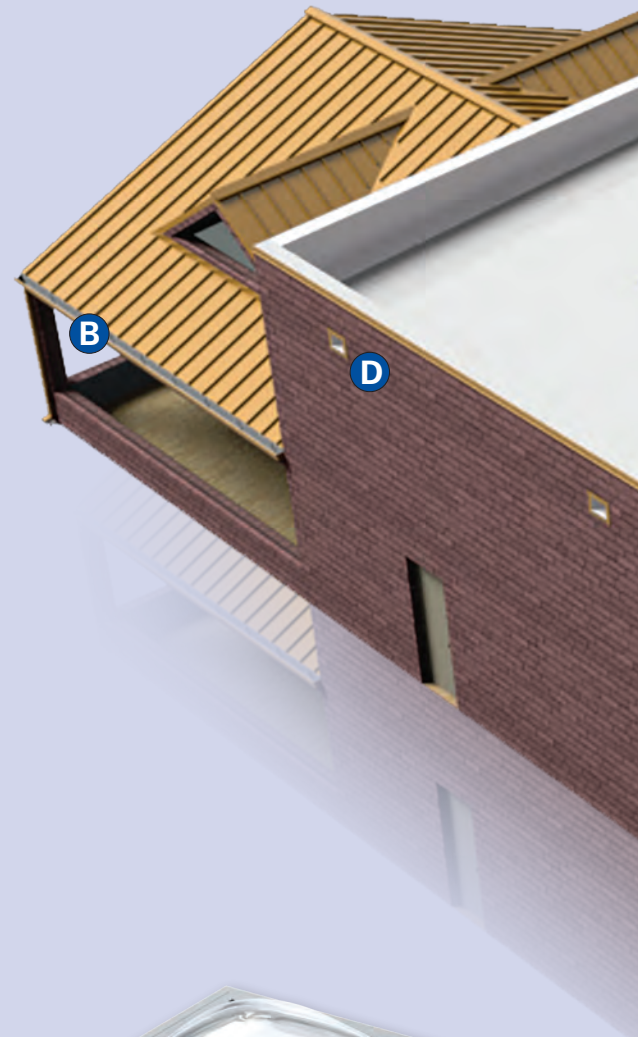
Protection is in the Details

Our EXCEPTIONAL Metals division manufactures edge metal and accessories, as well as drainage products. We also manufacture unique membrane skirted products, including scuppers, conductors and collectors that are made with reinforced single-ply roofing membrane to provide unmatched strength at critical transitions.

With EXCEPTIONAL Metals edge metal products, we offer a high-quality solution for edge metal that also has an aesthetic look for a variety of roofing needs — and a majority of our edge metal products are ES-1 compliant.

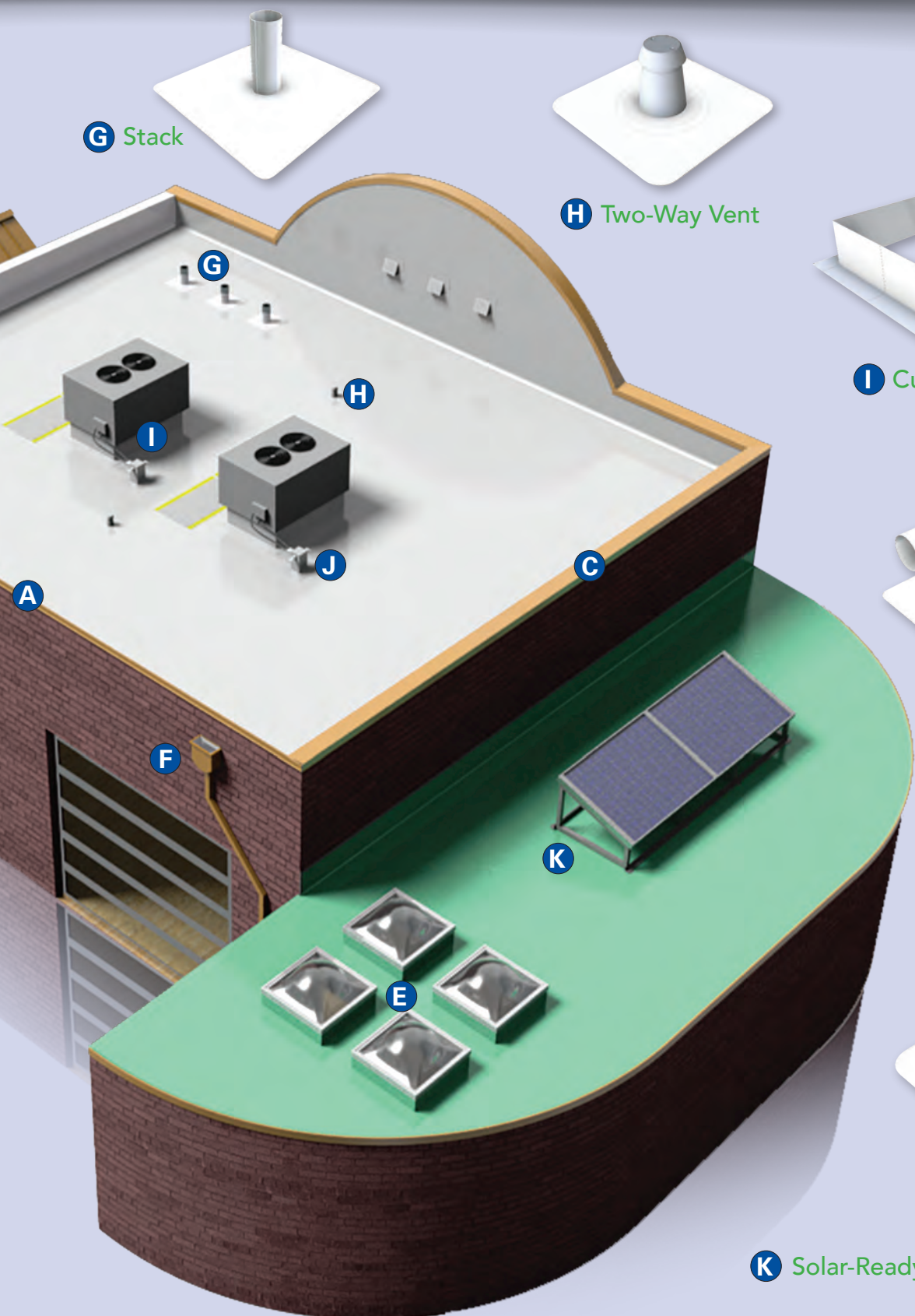
Metal Roof and Wall Panels

EXCEPTIONAL Metals also offers a full line of metal roof and wall panel systems that are both aesthetically pleasing and structurally sound. With a wide range of customizable options, there is a solution for every project.

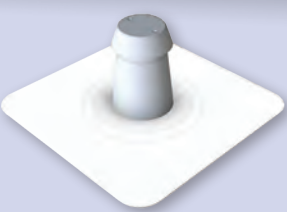


With a thick and high density lens, Duro-Light skylights get the job done at a value price with outstanding lifecycle cost benefits.

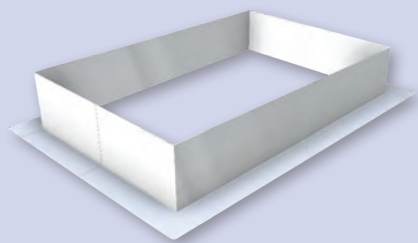
Custom sizes are available.



G Stack



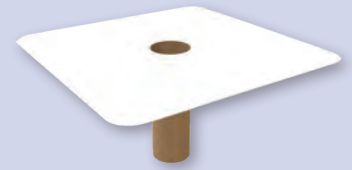
H Two-Way Vent



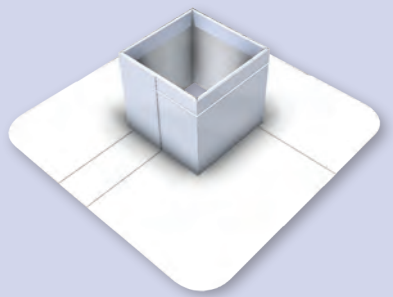
I Curb Flashing



J ATR Hub



Drain



Pitch Pan

K Solar-Ready Flashings

Deck-to-Sky and Installation Solutions

Increasing Efficiency

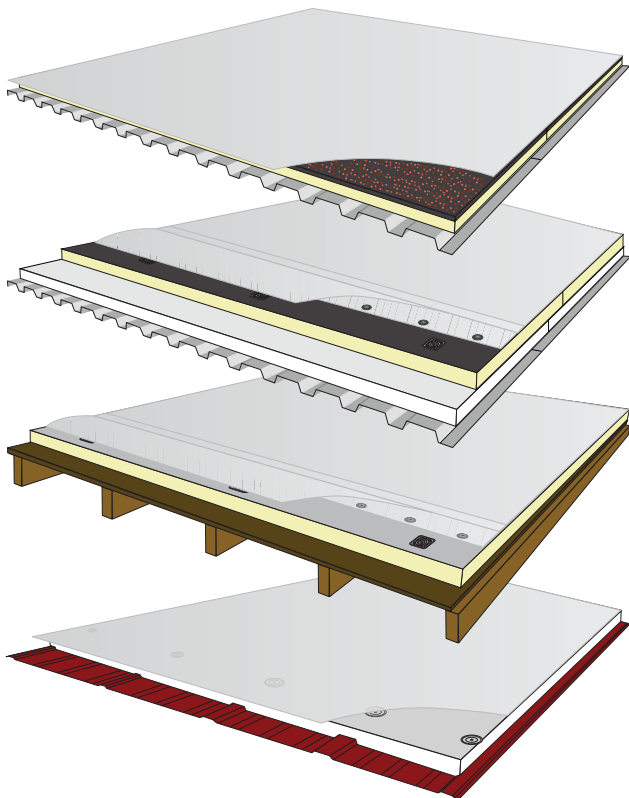
As a full roofing systems provider, Duro-Last offers many different products for fast and efficient roof installation, including:

Fasteners

TIP-TOP® Screw Manufacturing, Inc., a sister company to Duro-Last, manufactures roofing fasteners including concrete screws, heavy-duty fasteners, construction fasteners, insulation fasteners and insulation plates for use with Duro-Last Roofing Systems and other applications.

Adhesives

For adhered applications, Duro-Last offers both solvent-based and water-based adhesives for membrane, along with low-rise foam options for insulation and cover board applications.



The Duro-Last Duro-Bond® Roofing System

This system is a mechanically-attached installation option using non-penetrating “induction weld” technology. This technique bonds the Duro-Last PVC membrane to a PVC-coated fastening plate beneath the roofing membrane, which also fastens insulation and recovery board materials to the roof deck. The OMG RhinoBond® is the preferred induction fastening system.



We’ve Got You Covered

Duro-Last offers complete roofing systems — with solutions from Edge-to-Edge & Deck-to-Sky. Deck-to-Sky options include everything from cover boards and vapor barriers to both polyisocyanurate (ISO) and expanded polystyrene (EPS) insulation. Additionally, insulation products from Duro-Last can contribute to roofing assembly best practices and play a critical role in reducing heat exchange. Through our easy ordering process, competitive pricing and logistical service support, our Duro-Guard® line of products is both cost-effective and convenient.

Additional Duro-Guard Products Include:

- Duro-Guard EPS Flute Fill Combo
- Fan Fold
- DensDeck®, EVERBOARD®, Securock® and DEXcell® roof boards
- Duro-Last Vapor Barrier & Torch Down Vapor Barrier

Reduce, Recycle, Reimagine

Duro-Last was Sustainable Before it was Cool

Sustainability has been a part of the Duro-Last culture for more than 20 years. Our founder, John R. Burt, came up with the idea of reimagining old PVC roofs and manufacturing excess into resilient flooring, walkway pads and concrete expansion joints.

Recycling

Duro-Last has a focus on recycling at every step of the product lifecycle. In addition to our manufacturing process that allows excess material to be recycled back into production, our custom-fabricated roof systems allow roofing contractors to reduce scrap on the job site — meaning less waste ends up in a landfill.

To date, sister company Oscoda Plastics®, Inc., in partnership with Duro-Last, has recycled more than 94 million pounds of PVC material.

Energy

White Duro-Last Roofing Systems can greatly reduce energy consumption and electricity bills by exceeding industry standards for reflectivity and thermal emissivity.



Manufacturers of the **World's Best Roof®** with proven performance since 1978

Best-in-Class Warranties

Duro-Last leads the roofing industry with comprehensive warranty coverage. With our warranty groupings, we have a level of coverage right for any job.

Duro-Last Supreme Warranties

- Offer consequential damage coverage
- Only available for Duro-Last and Duro-Fleece Plus membranes

Duro-Last Ultra Warranties

- Cover both material and labor
- 15 & 20-year NDL hail and/or high wind warranties

Duro-Last Basic Warranties

- 15, 20, 25 & 30-year NDL warranties

Duro-Last Residential Warranties

- 15 & 20-year warranties

Inspection

Upon completion of a commercial job, a Duro-Last Quality Assurance Technical Representative will inspect the Duro-Last Roofing System. Between the inspections in our manufacturing plant and on the roof, field seams are thoroughly examined.



Spec Generator

Our Spec Generator makes it easy to specify and order Duro-Last. This online tool features the full spectrum of Duro-Last Roofing Systems along with corresponding warranties, technical data and roof details to ensure the best roofing solution for any situation.



For more information give us a call
or visit our website today.

800-248-0280

duro-last.com

"Duro-Last", the "World's Best Roof", "Duro-Guard", "Duro-Tuff", "Duro-Fleece", "EXCEPTIONAL", "Rock-Ply", "Shingle-Ply", and "Duro-Bond" are registered trademarks owned by Duro-Last, Inc.
"Oscoda Plastics" is a registered trademark owned by Oscoda Plastics, Inc.
"Elvaloy" is a registered trademark owned by DuPont™.
"Tip-Top" is a registered trademark owned by Tip-Top Screw Manufacturing, Inc.
"RhinoBond" is a registered trademark of OMG, Inc.
"DensDeck" is a registered trademark owned by or licensed to Georgia-Pacific Gypsum LLC.
"EVERBOARD" is a registered trademark of ReWall Company, LLC.
"Securock" is a registered trademark owned by or licensed to USG Corporation.
"DEXcell" is a registered trademark owned by or licensed to the National Gypsum Company.
ENERGY STAR is only valid in the United States.
Corporate Brochure ORIG: 11.15.16 REV: 12.21.17, 5.6.19 – DL090001

